

Accidentallocavore®

Dear Friend,

Sometimes we just have to keep eating out (sigh). This week, check in on a [new place](#), opened by a local favorite.

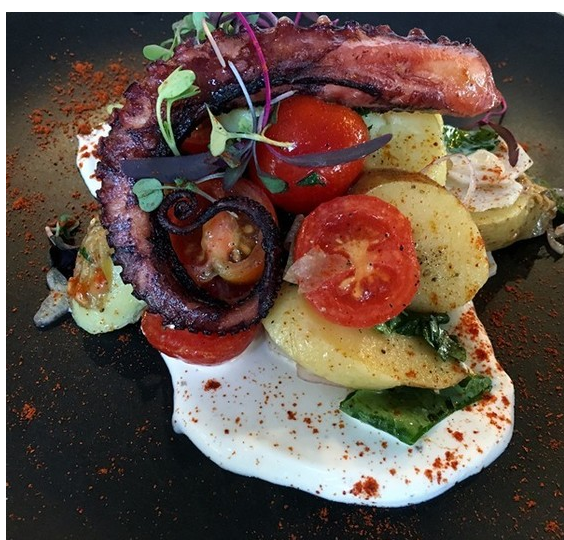
Back on the radio after a few weeks off. Click to the end to see who's on first...

September always makes me sad--it's the end of summer, so I picked this [pile of peppers](#) for the calendar to cheer up the transition.

Wouldn't your food loving friends like to get a treat every Tuesday? Forward this to them and they [can sign up for the newsletter](#). Or click the icons above to send to a friend, share on Twitter, Facebook, or LinkedIn.

Enjoy!

Anne



Farmers and Chefs

If you went to a restaurant named Farmers and Chefs, you'd probably be expecting a farm-to-table experience, wouldn't you?

Maybe I'm being a little fussy, but the first thing I thought of when I saw the menu at Farmers and Chefs was that it was surprisingly unseasonal for a place that is "Drawing inspiration from our regions [sic] beautiful Hudson Valley farms while combining the freshest in season local ingredients combined with global influences."

[Farmers and Chefs:](#)



September Calendar

Can you believe it's September already? What would you do with this pile of peppers?

[Download the Calendar:](#)

Calendar

Accidental Locavore *Live!*

We were finally back on air with Ray Armater the new Executive Director of Poughkeepsie Farm Project. Find out about the fall CSA shares and the upcoming [Soup-a-Bowl!](#)

Monday the 24th we'll be talking with Katie Helmuth Martin, owner of [Tin Shingle](#). Find out how your business can be a star on social media.

Tune in at 5:00 EDT Mondays. www.pawlingpublicradio.org or listen anytime on [our homepage](#).